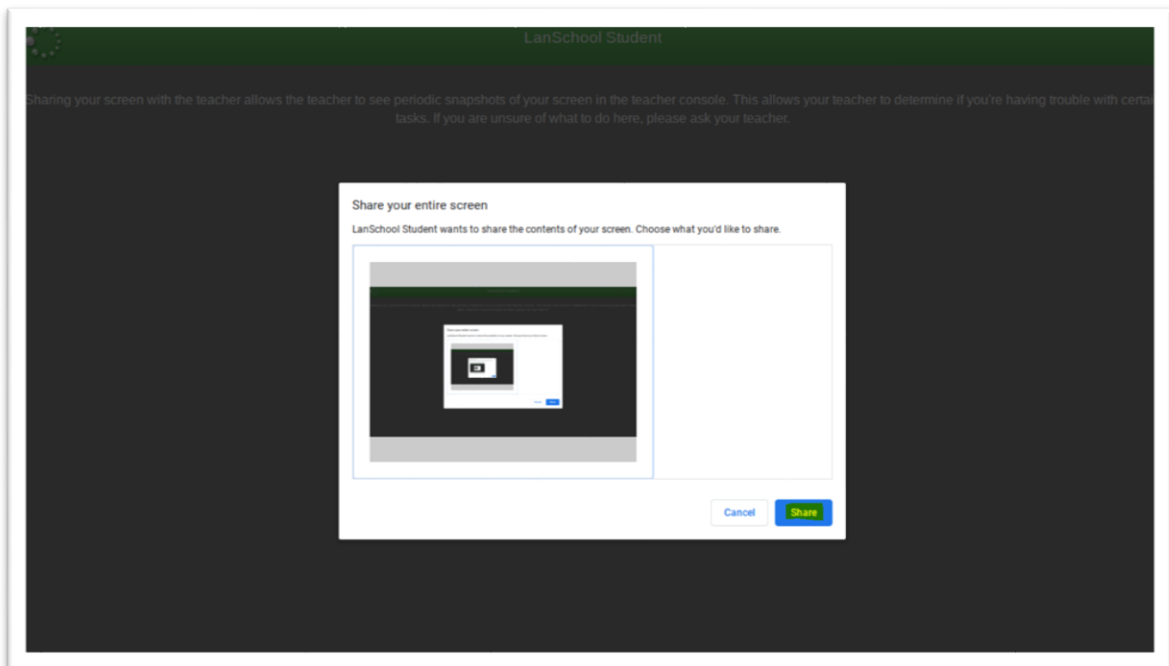


ACCEPT LANSCHOOL PROMPTS

Created By: Technology Services

LANSchool is a software used by UCPS to monitor and interact with Chromebooks **WHILE THE DEVICE IS ON UCPS PREMISES ONLY**. Chromebooks connected to any other home or business wireless cannot be monitored or controlled using LANSchool.

1. In order for LanSchool to function correctly on student Chromebooks it is important for a couple of steps to be followed by the student.
2. Upon logging in the student will be presented with the following screen. They will need to first click inside the box that displays their desktop. The share button will be greyed out until they do this.



3. After clicking inside the desktop box the share button can now be selected thus completing the student setup for LanSchool.